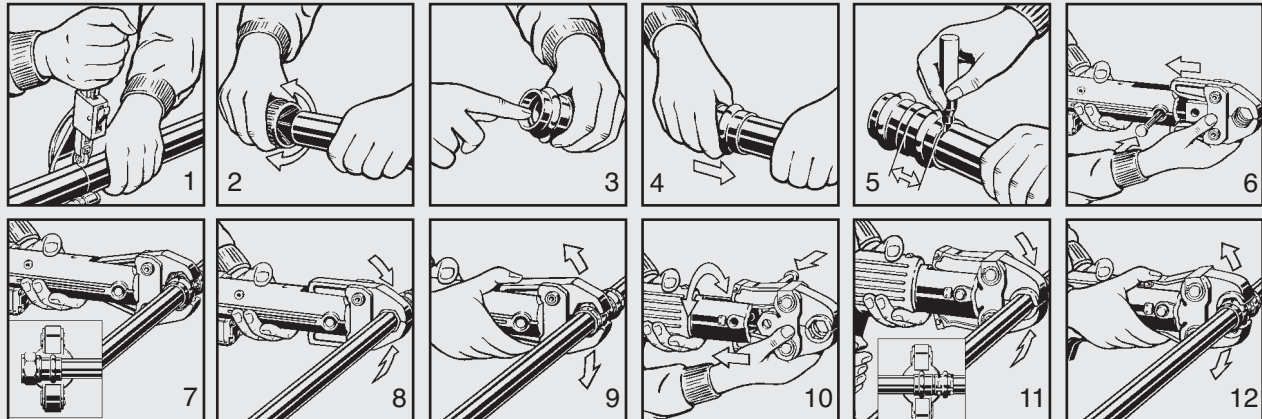


## Product Instructions

For Types K, L and M Hard Copper Tubing in 1/2" to 2" and Soft Copper Tubing in 1/2" to 1-1/4"

**⚠ WARNING** Read and understand all instructions for installing ProPress fittings. Failure to follow all instructions may result in extensive property damage, serious injury or death.



ProPress Insertion Depth Chart						
Tube Size	1/2"	3/4"	1"	1-1/4"	1-1/2"	2"
Insertion Depth	3/4"	7/8"	7/8"	1"	1-7/16"	1-9/16"

1. Cut copper tubing at right angles (using displacement type cutter or fine-toothed steel saw).
2. Deburr tubing on inside and outside to prevent cutting fitting seal.
3. Check seal for correct fit. Do not use oils or lubricants. Use only ProPress Shiny Black EPDM or Dull Black FKM Sealing Elements.
4. While turning slightly, slide press fitting onto tubing to the fitting stop. **Note: End of tubing must contact stop**
5. Mark insertion depth.
6. Insert the appropriate jaw into the pressing tool and push in holding pin until it locks into place.
7. Open the jaw and place at right angles on the fitting. Visually check insertion depth using mark on tubing.
8. Start pressing process and hold the trigger until the jaw has engaged the fitting.
9. After pressing, the jaw can be opened again.
10. For applications requiring ProPress with FKM sealing elements, remove the factory installed EPDM sealing element and replace with FKM sealing element.



**Pressure Testing:** Pressure testing is to be carried out in accordance with local codes. The Smart Connect Feature™ provides quick and easy identification of unpressed connections during the pressure testing process. Unpressed connections are located by pressurizing the system with a maximum pressure range of 1/2-85 psi for gases and 15-85 psi for liquids. The SC Feature is a special indentation in 1/2" to 2" dimensions located on the inside surface of the fitting near the sealing element. This indentation assures leakage of liquids and/or gases from inside the system past the sealing element of an unpressed connection. The indentation is removed during the pressing process creating a leak-free, permanent connection.

VIEGA • One Company... One Partner... Delivering System Solutions.

301 N. Main, Floor 9 • Wichita, KS 67202 • Ph: 877-Viega-NA • Fax: 316-425-7618 • E-Mail: service@viega.com • www.viega-na.com